



Results of Member Survey Season 42 (MS23)

This season 19 Keele World Affairs meetings were held and one postponed due to bad weather. We had 336 replies to this year's survey. With over 66% of members completing the survey between 24 March 2023 and 11 April 2023, for which responses we are extremely grateful.

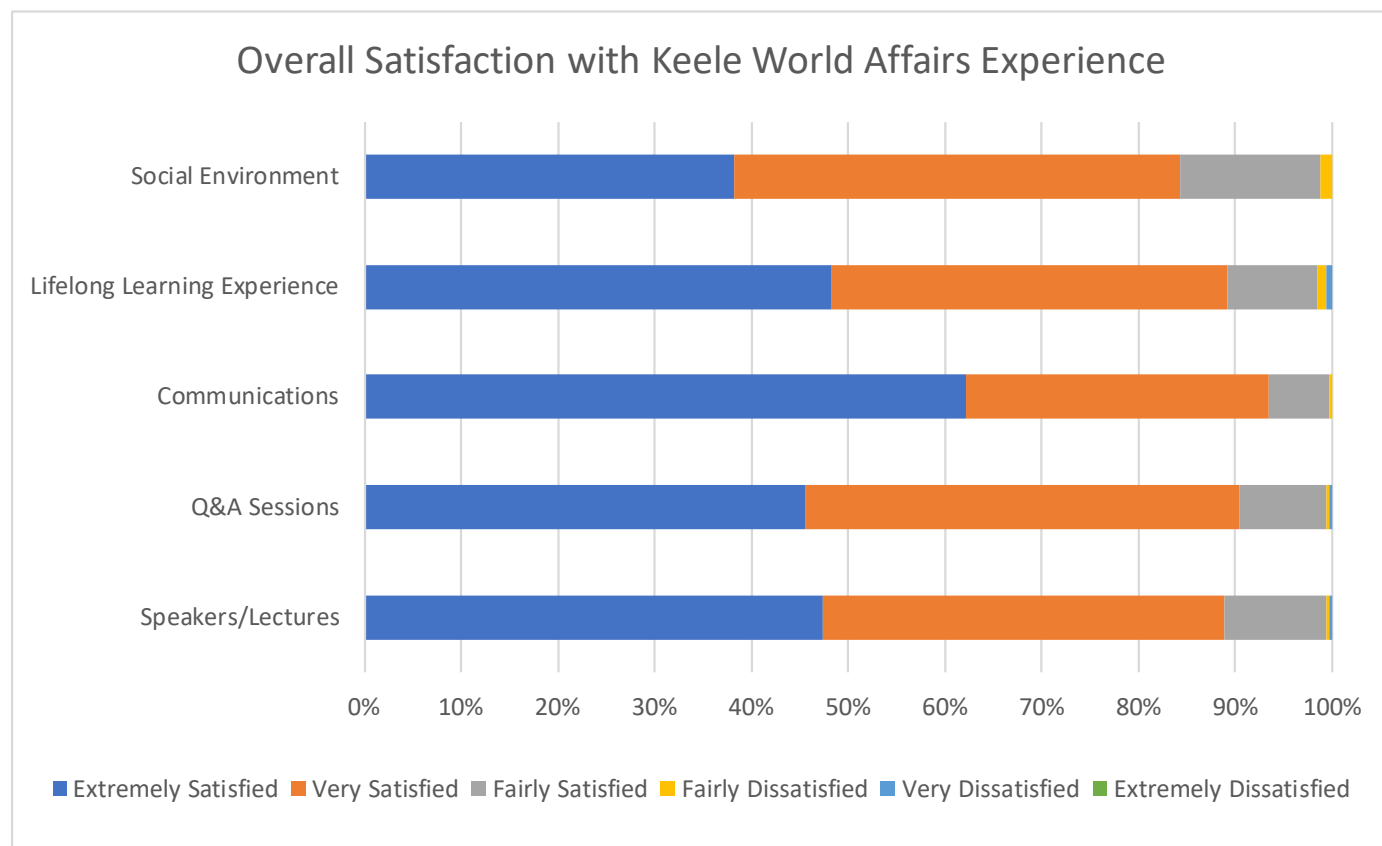
Overall Satisfaction with Keele World Affairs Experience

We ask the same questions in each annual survey and Season 42 results are as follows:

	Speakers/Lectures	Q&A Sessions	Communications	Lifelong Learning Experience	Social Environment
Extremely Satisfied	45.8%	44.0%	60.1%	46.7%	36.9%
Very Satisfied	40.2%	43.5%	30.4%	39.6%	44.6%
Fairly Satisfied	10.1%	8.6%	6.0%	8.9%	14.0%
Fairly Dissatisfied	0.3%	0.3%	0.3%	0.9%	1.2%
Very Dissatisfied	0.3%	0.3%	0.0%	0.6%	0.0%
Extremely Dissatisfied	0.0%	0.0%	0.0%	0.0%	0.0%
No Answer	3.3%	3.3%	3.3%	3.3%	3.3%

Across all categories there was an average rating of:

- 86.4% satisfaction for 'Extremely Satisfied' + 'Very Satisfied'
- 95.9% satisfaction for 'Extremely Satisfied' + 'Very Satisfied' + 'Fairly Satisfied'
- 0.8% dissatisfaction for 'Fairly Dissatisfied' + 'Very Dissatisfied' + 'Extremely Dissatisfied'



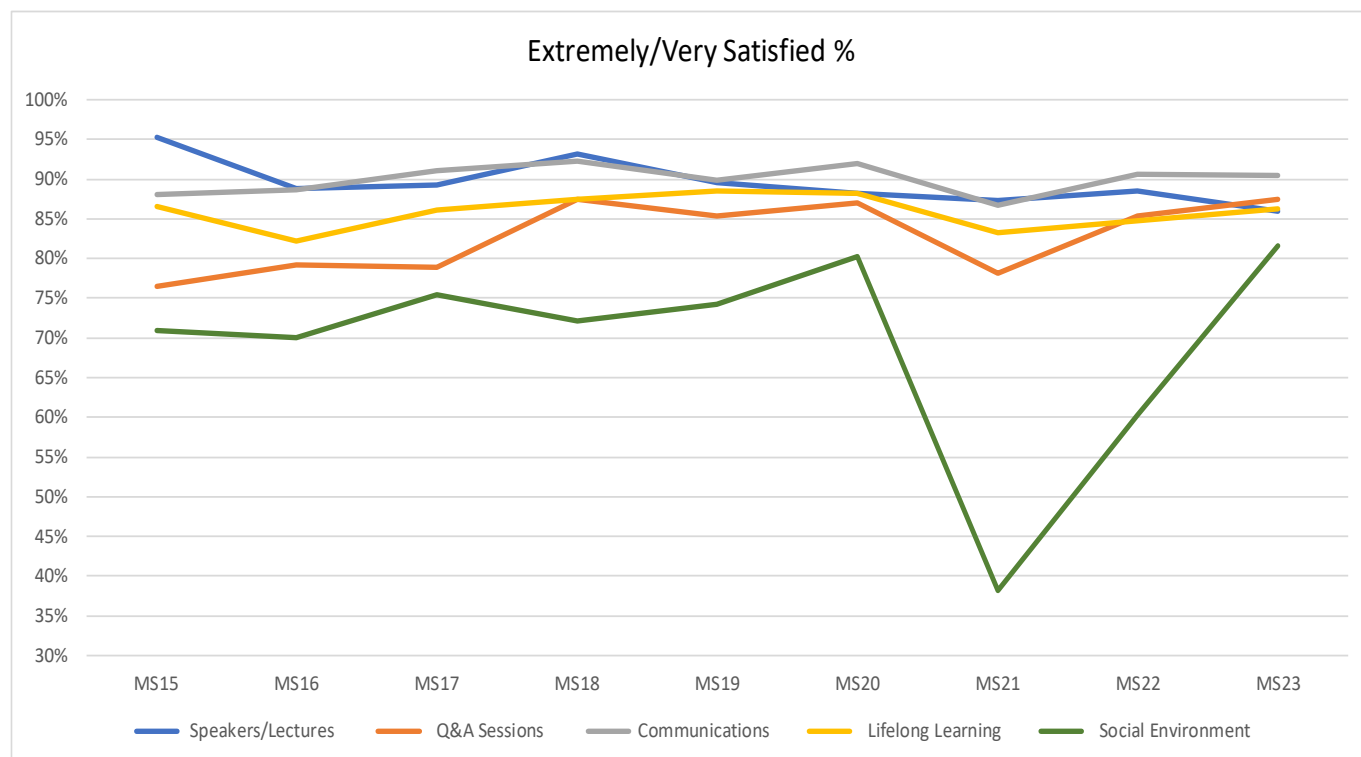


Overall Satisfaction compared with previous seasons

The chart below compares this season's ratings with earlier seasons.

The season 42 survey refers to a mainly Westminster Theatre audience.

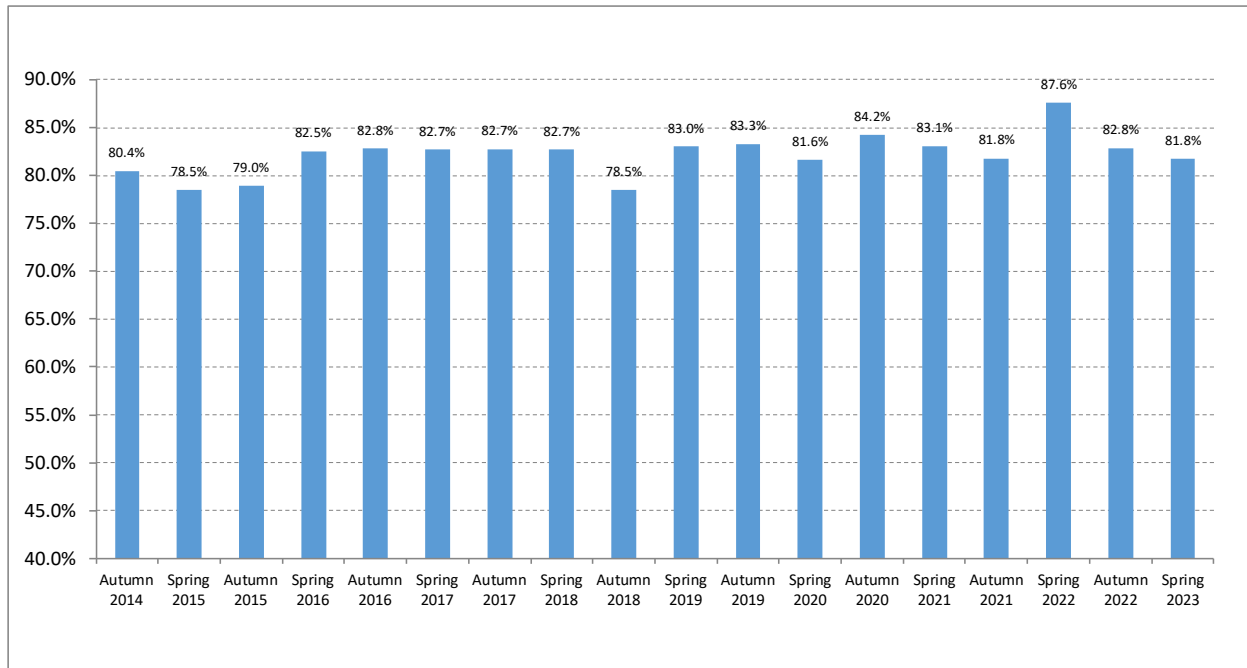
Most ratings in MS23 term have shown improvements over the previous MS22 term, especially for Q&A, Communications and Social Environment. There is a massive improvement for Social Environment satisfaction over last season which is probably attributable to the return to the Westminster Theatre and excellent catering provision.



'Rating' of Speakers

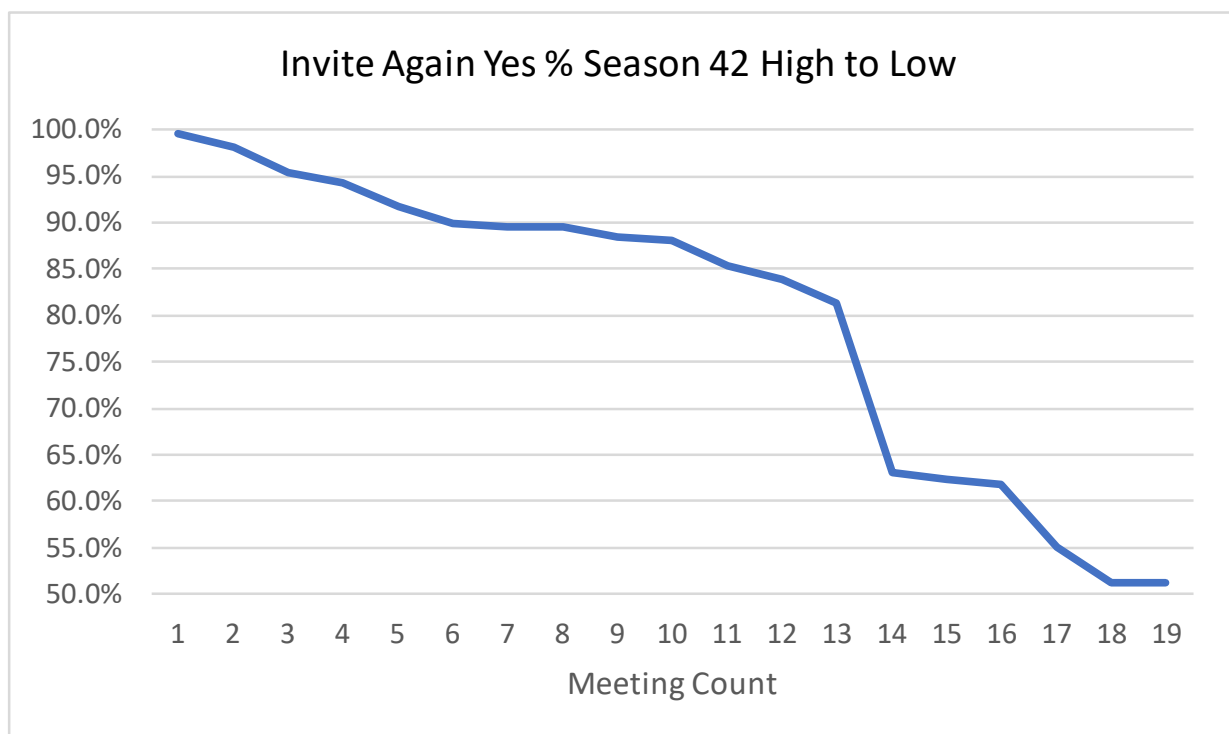
We have a long-running question that asks the member (Yes or No) whether or not they would like each speaker to be invited again. Though some dislike this simplistic formulation, it continues to indicate good selections and helps us identify any visitor who in some way did not match the high standard of the series.

The following charts show excellent results for the season, that recommend inviting speakers again. The 19 speakers have certainly provided us with high levels of expertise and some memorable evenings with very few leaving a feeling of disappointment.



Note: A speaker on whom the members are equally divided would 'score' 50%. If 80% say Yes and 20% say No, then 4 out of 5 are in favour of a return.

The chart below shows, 13 out of 19 speakers topped over 80%, and 10 speakers topped over 88%.





Appendix: Analysis of MS23 Respondents

We asked members to classify themselves according to their participation during the season.

Number of replies / respondents	336
Attended some Westminster Theatre meetings but have not watched others on video	195
Attended some Westminster Theatre meetings and watched some other meetings on video	130
Watched some meetings on video but have not been in the Westminster	7
Did not attend any meetings or watched any meeting video	4

This season 19 meetings were held as one was postponed due to bad weather. As a general guide, we know that 437 members attended at least one meeting.